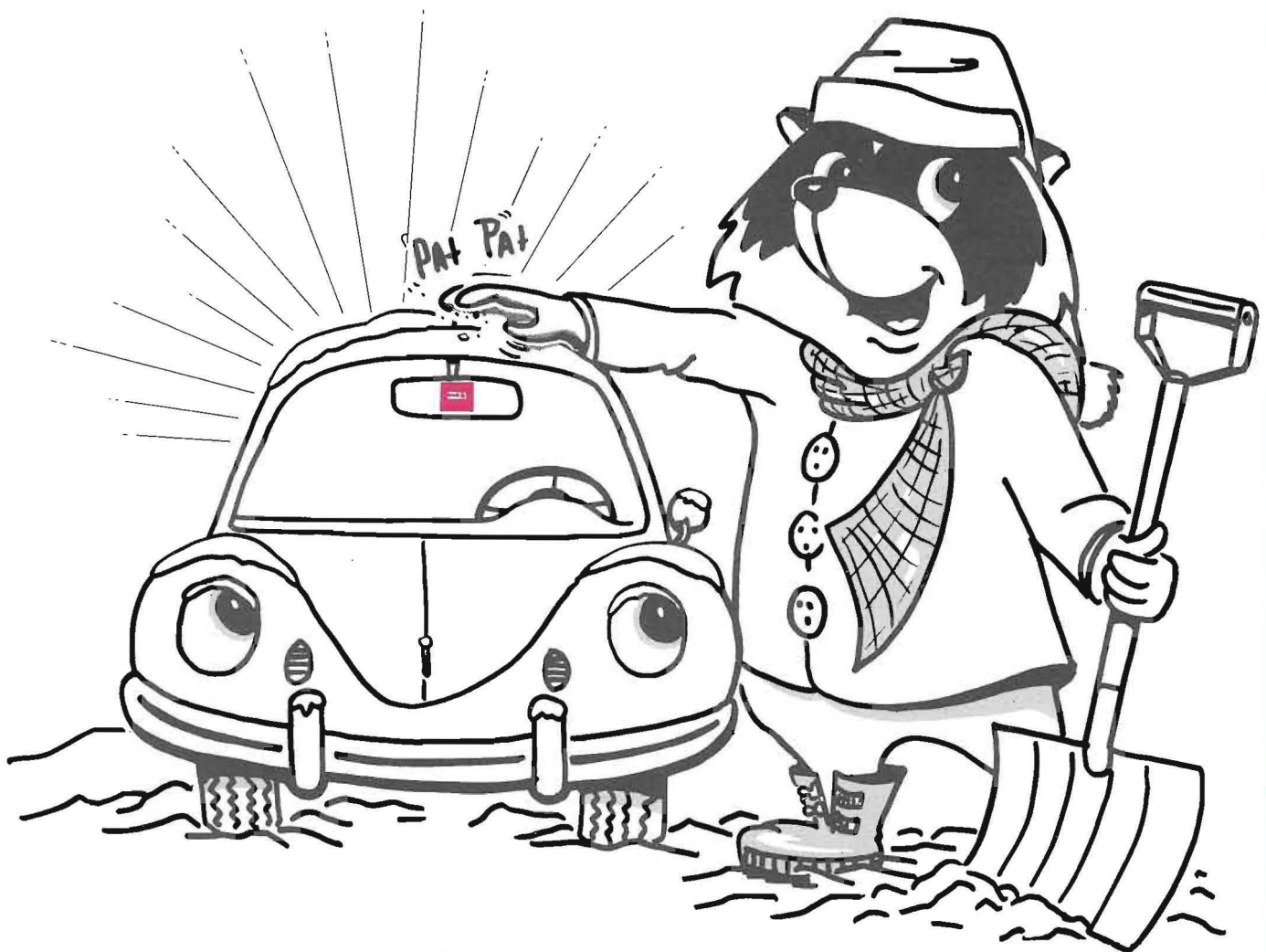


SEE THIS LITTLE STICKER?

Everyone who ever drives to work here should get one before December 10 and put it on the back of his rear view mirror so it can be seen through the windshield. It's a combination parking-registration decal. The number in the middle lets Plant Protection notify you if something happens to your car while you're at work; the color of the sticker shows where you should be parking. If we get more people parked in the right areas, it will be a lot safer, and less confusing when you get out of work. Since this system is very important, people without stickers will be unable to park in the lots without special permission from the guard on duty. So here are a few maps to show you the right place to park.

Also, there's a center page in this special NEWSLETTER which you should keep for when the snow flies. It shows the special snow emergency routes and tells just what you should do in a snow emergency.



MERRIMACK VALLEY WORKS NEWSLETTER

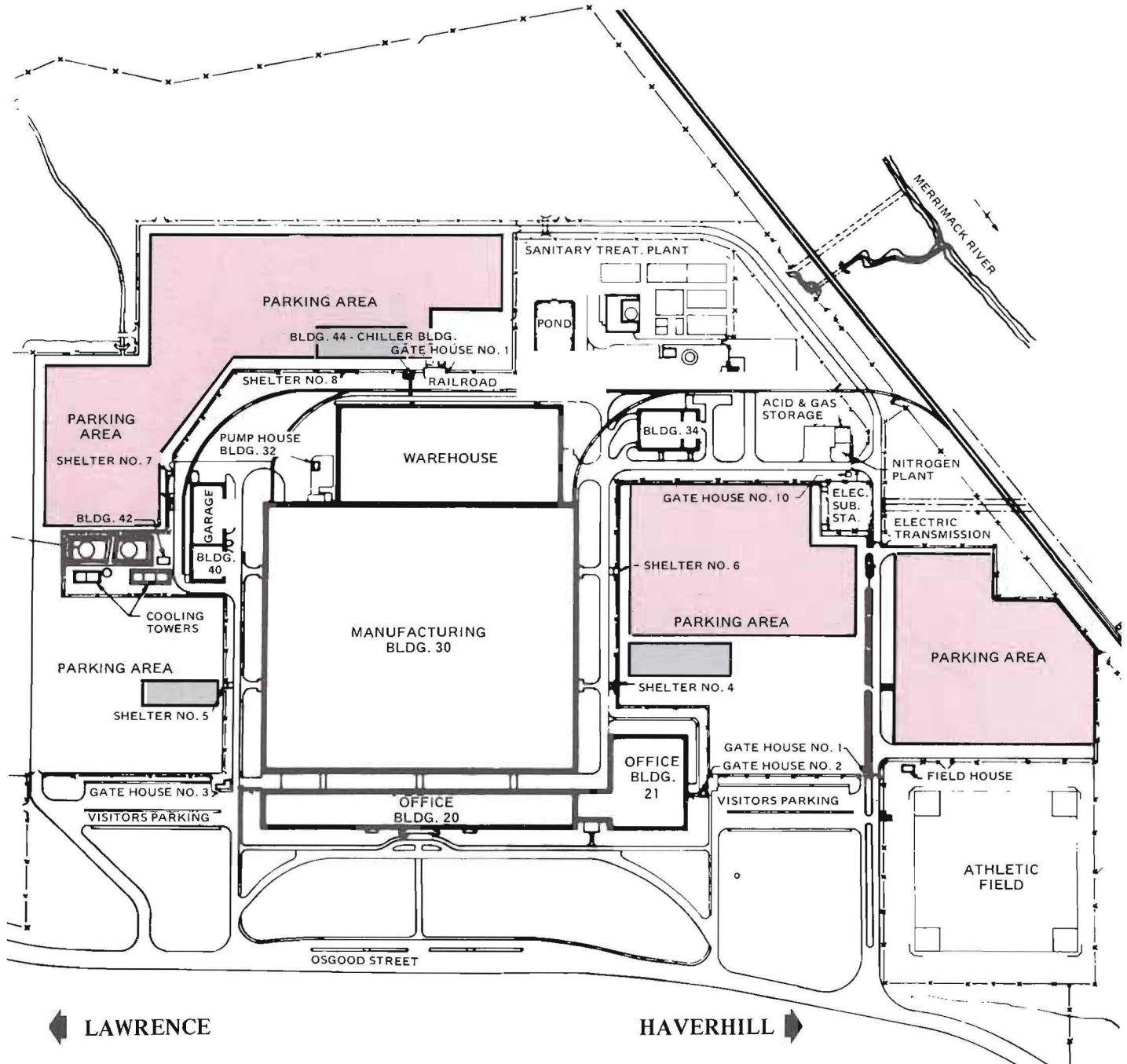
Vol. 6, No. 11 A Western Electric Publication Nov., 1973



SPECIAL EDITION

FIRST SHIFT PARKING AREAS (RED DECALS)

(6:30 a.m. to 3 p.m.)



AREAS SHOWN IN GREY ARE RESERVED FOR MEDICAL ONLY. CARS PARKED IN THESE AREAS REQUIRE MEDICAL DEPARTMENT AUTHORIZATION SHOWN BY A YELLOW AUTO REGISTRATION STICKER

MERRIMACK VALLEY WORKS
NEWSLETTER
 Published By
Western Electric
 For the information of employees of the
 MERRIMACK VALLEY WORKS
 North Andover, Massachusetts

Dept. 02040
 Area Code 617-686-0600 Ext. 2594
 Editor
ARTHUR BELLEVILLE
 Photographer
JAMES P. CHASSE

SNOW EMERGENCY TRAFFIC PATTERN (NORTH LOT)

SAVE THIS PAGE so you won't have to scurry around later
 -These are the emergency exit and entrance plans that go into effect during snow emergencies



In order to clear the lots of both traffic and snow, Plant Protection has come up with a new snow emergency traffic pattern.

If there is a snow emergency this winter, people leaving the lots will exit almost the same as always.

People coming into work will have to be aware of changed entrance procedures:

COMING FROM THE DIRECTION OF LAWRENCE:

Enter through the roadway at the main gate (gate 3) which is usually used for delivery truck traffic, proceeding past the garage and power house, and through gate 7 into the west parking lot. People coming in this way will be notified of the emergency traffic pattern before they get to the entrance by blinking signs placed on Rte. 125.

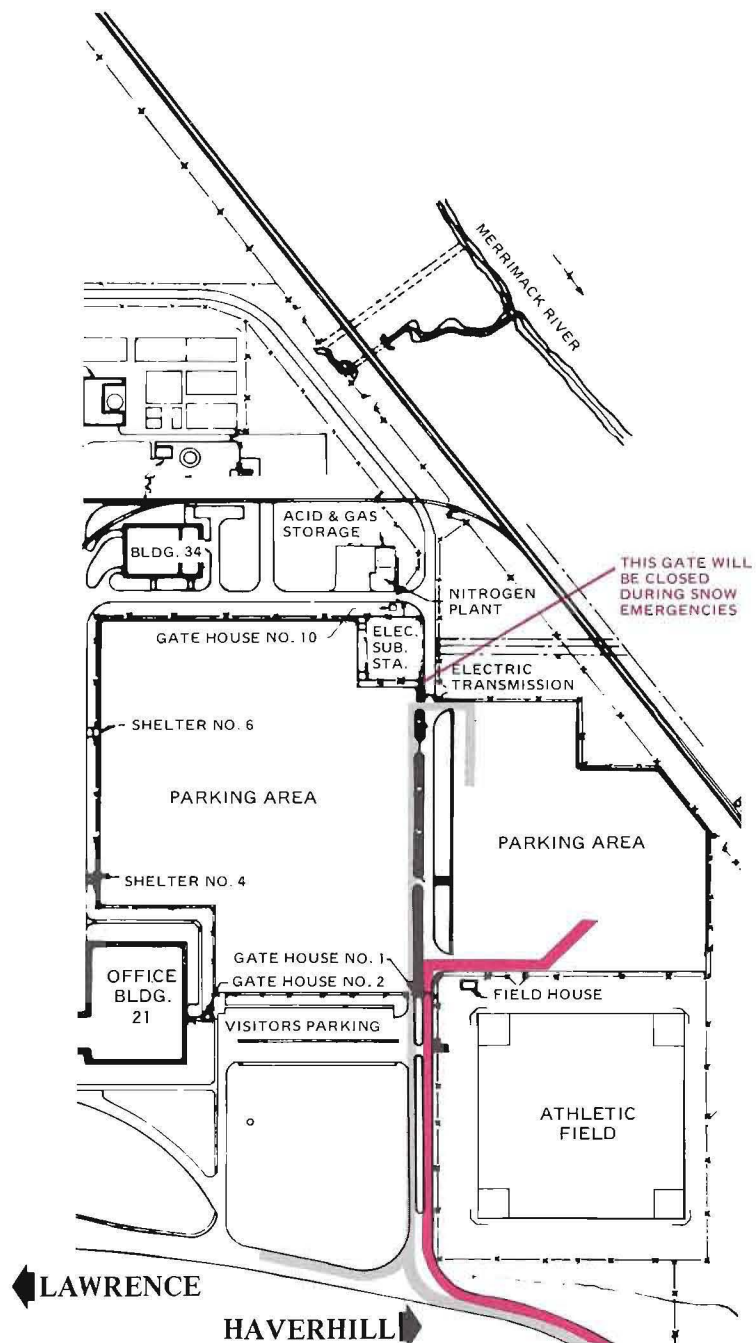
COMING FROM THE DIRECTION OF HAVERHILL:

People coming this way will be routed directly to the North North parking lot. They will be alerted by blinking signs placed on Rte. 125 before the 1st entrance. Outgoing traffic will be routed to allow one lane for incoming cars.

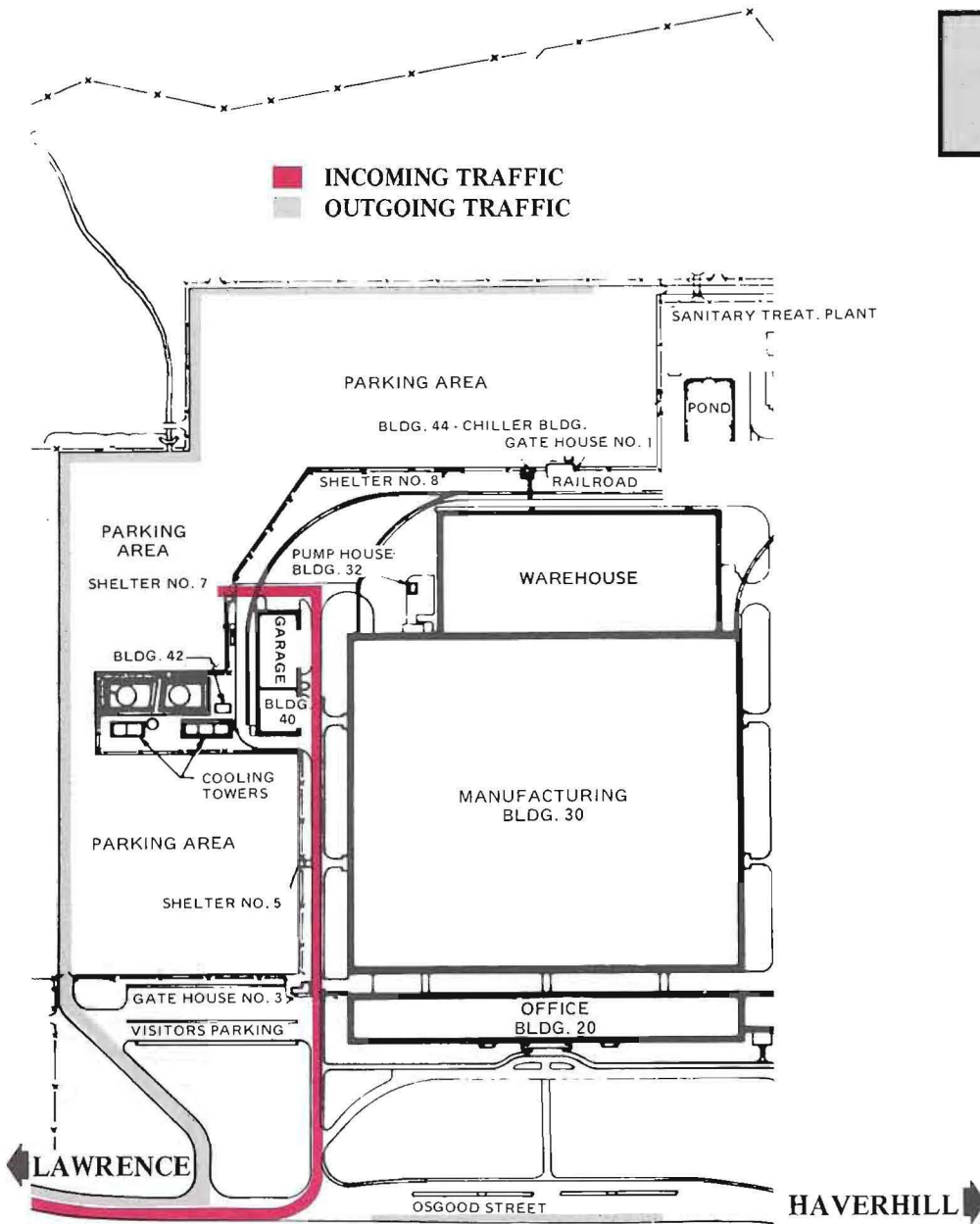
CHANGES IN EXIT PROCEDURES:

Since traffic will be entering the North North Lot during exit hours, the normal four lanes of exit traffic will be cut to three. Also, people who park in back of the plant and who leave via the Haverhill side will not be able to use the roadway behind the plant and will have to exit via the Lawrence side roadway.

■ INCOMING TRAFFIC
 ■ OUTGOING TRAFFIC



SNOW EMERGENCY TRAFFIC PATTERN (SOUTH LOT)



**YOU CAN MAKE THIS
A WHOLE LOT EASIER**

Driving into work each day, especially during the winter, can often be difficult.

Why not take a vacation from behind the wheel, or make your commuting more worthwhile?

JOIN A CARPOOL

There are hundreds, perhaps thousands, of people at the Works who could team up on rides. Car pooling makes the traffic lighter, takes the tension out of commuting, and gives you someone to talk to on the way home.

Also, car pooling is the best way to help beat the energy crisis this winter, as gas production and supplies have already been cut.

Save fuel and make new friends – start a carpool.

If you're looking for a ride or riders, call the Wevalley Club on extension 2423.

HOW DO I KNOW IF IT'S A SNOW EMERGENCY?

First, use your good judgement, a few flurries or even a few inches of snow do not qualify as an emergency.

But when the snow is really coming down like a cotton curtain, dial your radio to these AM stations. They will broadcast the announcement that the Works has shifted to the emergency traffic patterns.

| Radio Station | Frequency |
|---------------|-----------|
| WLLH | 1400 |
| WHAV | 1490 |
| WBZ | 1030 |
| WCCM | 800 |

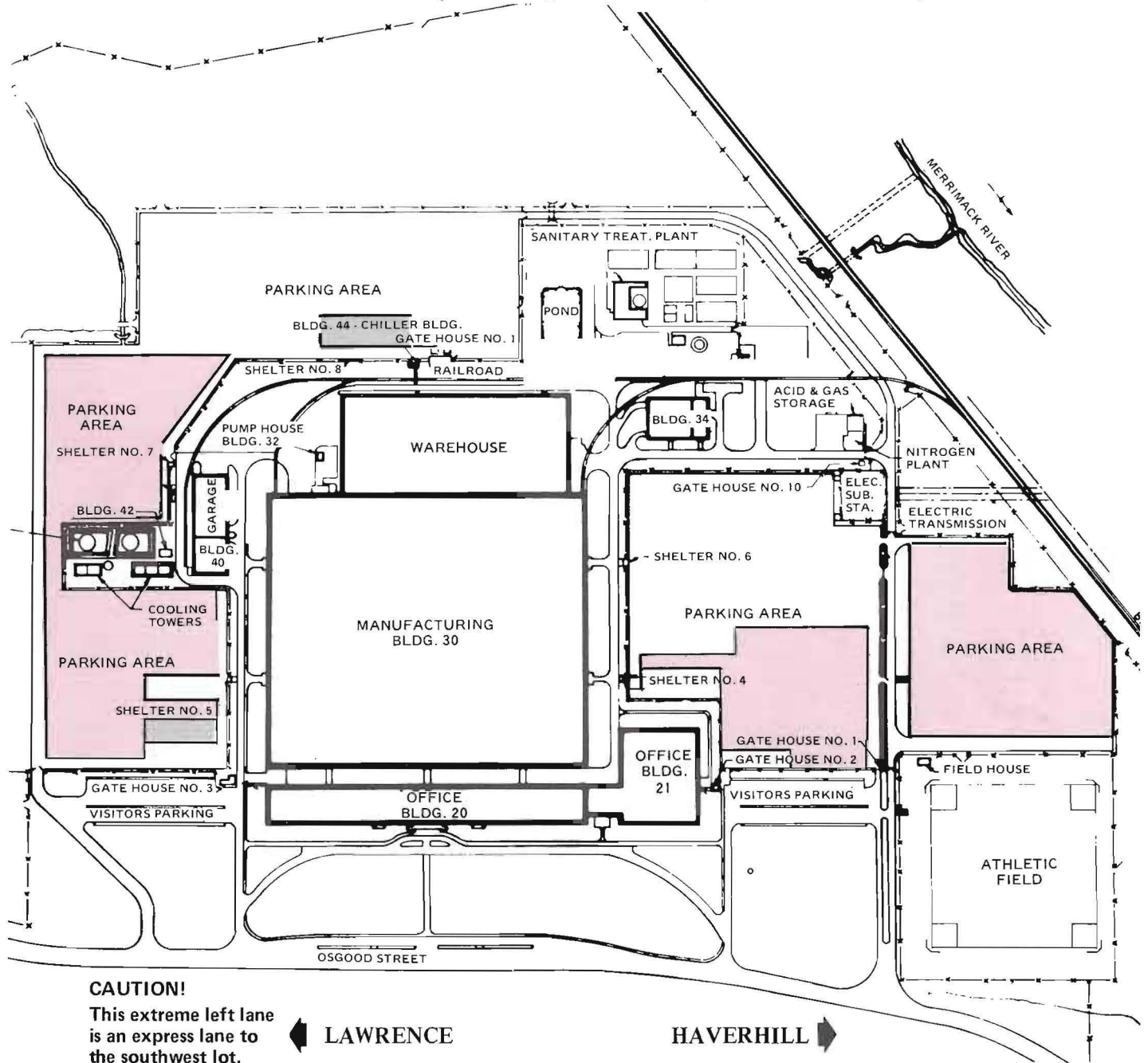
If you are curious about snow emergencies, please, do not call the Works for information, as mass calling will jam the switchboard.

If you haven't checked the radio broadcasts, remember, look for the signs when approaching the Works. They will be blinking if emergency conditions exist.

OFFICE SHIFT and THIRD SHIFT PARKING AREAS

(8 a.m. to 4:45 p.m. and 10:00 p.m. to 6:30 a.m.)

The office shift will be identified by BLUE registration decals, and the third shift by RED decals.



CAUTION!

This extreme left lane is an express lane to the southwest lot.

◀ LAWRENCE

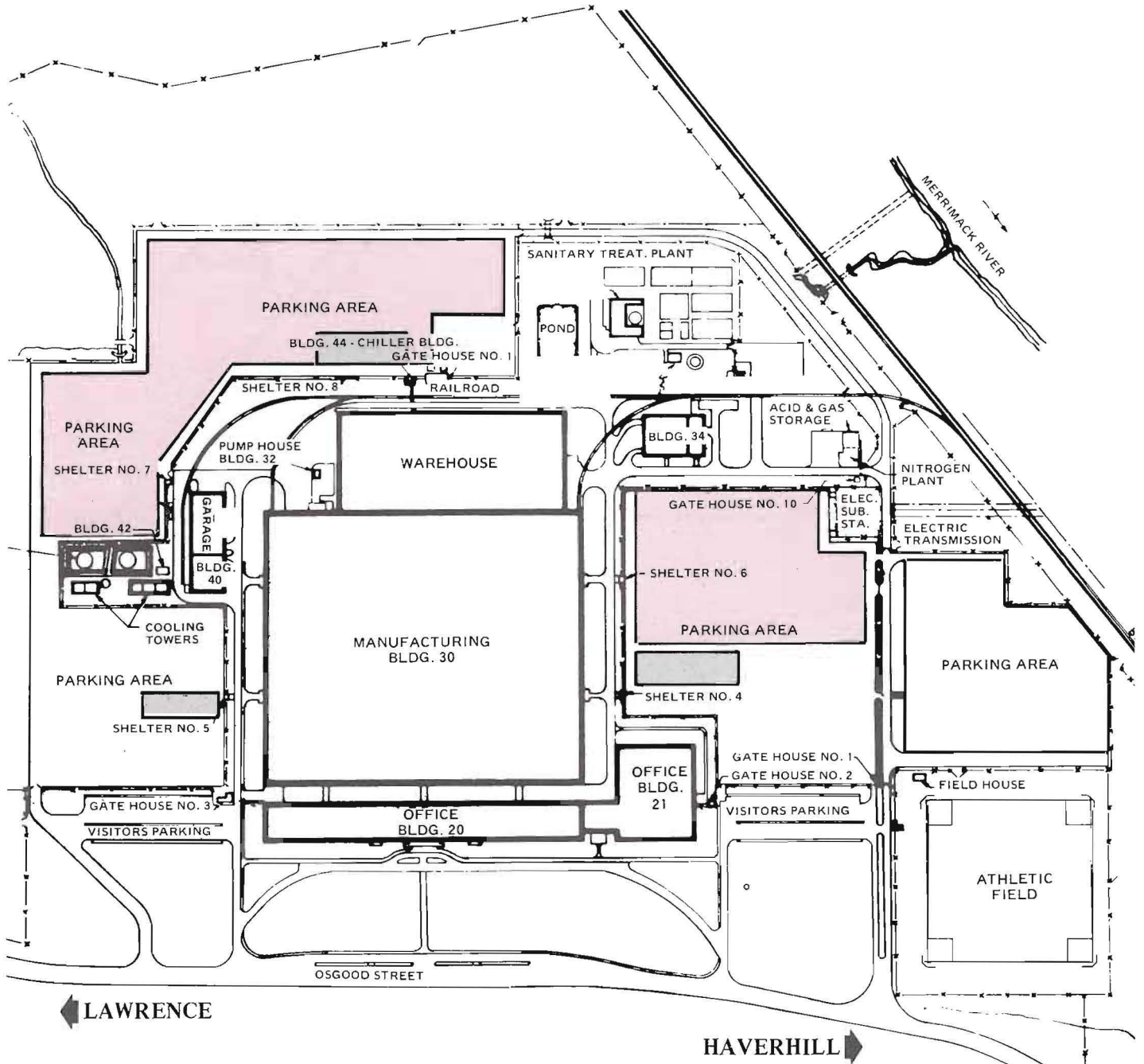
▶ HAVERHILL

The parking lots here at the Merrimack Valley Works cover 35 acres of land. With that much space filled with cars each day, there have to be some safety rules. Please cooperate by:

- keeping speeds below 15 m.p.h.
- not cutting through parking lanes
- stopping for pedestrians
- not blocking a roadway or aisle waiting for a better space
- complying with security personnel requests
- parking within the lines and using only one space

SECOND SHIFT PARKING AREAS (RED DECALS)

(4 p.m. to 12:30 a.m.)



AREAS SHOWN IN GREY ARE RESERVED FOR MEDICAL ONLY. CARS PARKED IN THESE AREAS REQUIRE MEDICAL DEPARTMENT AUTHORIZATION SHOWN BY A YELLOW AUTO REGISTRATION STICKER

Remember, after Dec. 10, you can't park in the MVW lots without a registration sticker!